



www.industrialsafetysolutions.com

Contents

LOADING THE EVOLUTION AND RANGER PRINTERS

Loading the Vinyl	3
Loading the Ribbon	4

LOADING THE SAFETYPRO AND RANGER PRINTERS

Loading the Vinyl	5
Loading the Ribbon	6

LOADING THE SAFETYPRO 9G AND 7G PRINTERS

Before Loading - Parts	7
------------------------------	---

Loading the Vinyl	8
Loading the Ribbon	9

DRIVERS AND SOFTWARE

Installing Software and Drivers	10
SafetyPro Print Driver Settings	11
Using FacilityWare Label Manager	13
ISS RTK Label Creator	17

SAFETYPRO ORDER FORM	18
----------------------------	----

Featured Information

TECH SUPPORT	19
BEST WARRANTY AND SERVICE	19
HIGHEST QUALITY VINYL	19
OUR CUSTOMERS	19

About Industrial Safety Solutions



14791 SE 82nd Dr, Clackamas Oregon, 97015

Our goal is to serve you. We offer quality industrial label printers and supplies, for much less than you'd expect. The SafetyPro line is formulated from the start to focus on quality, long-lasting and cost-effective results. We offer the supplies and equipment that you want, need, and use the most. Our lean methods and ideologies allow us to offer you the best prices, selection, and service in the industry.

Our west-coast location means we can take orders as late as 6pm EST, and still get them out that day! The Portland metro area has become a center for innovation and technology, and the industrial label printing industry is no exception. We are proud to call the Northwest our home, and offer convenience to our customers, around the world, with rapid shipping and response times.

Our OEM relationships give us access to a virtually unlimited inventory of labeling equipment and supplies. Our on-site warehouse is stocked with a full lineup of vinyl labeling tape in hundreds of color, size, and style combinations. This extensive inventory means we can usually ship your order for immediate delivery.

Industrial Safety Solutions is committed to being your source for industrial labeling equipment and supplies. Our knowledgeable staff has over 40 years combined, diverse experience in heavy-duty print technologies, and is dedicated to making your job easier. We go beyond the sale, every single time, to offer exceptional support throughout your label project.



Loading the Evolution - Vinyl

Step 1:

Make sure the machine is turned off while loading all materials. To open the machine, gently rotate the two light green cover lock knobs towards you. Lift the chassis. Your printer should now resemble the image.



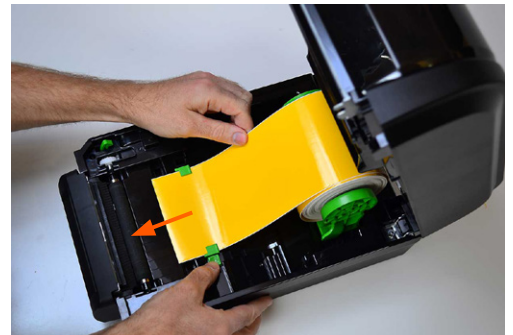
Step 2:

Select a roll of vinyl labeling tape. Gently separate the two green label supply arms by pushing one to the side. They are spring-loaded and both move in tandem. Center the roll of vinyl labeling tape and ease the supply arms into place.



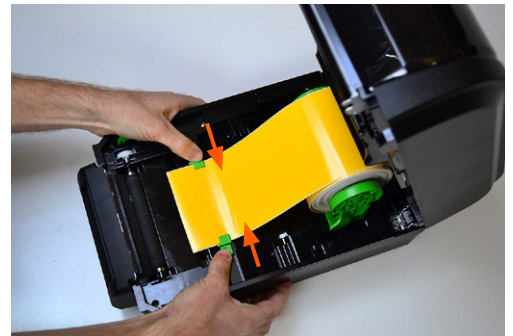
Step 3:

When the vinyl labeling tape is properly in place, the roll should turn freely. Unwind some material and feed it through the two green guides near the front of the printer. Like the supply arms, these guides slide open and closed in tandem.



Step 4:

Make sure the vinyl labeling tape is centered and the two green guides are passing over the edge of the material, as shown in the picture.



Step 5:

The vinyl labeling tape should move freely. Pull a small amount of tape through the cutter assembly in the front of the machine. Your vinyl labeling tape is now properly loaded.



Loading the Evolution - Ribbon

Step 1:

If necessary, open the machine following the instructions on Page 3, Step 1. Open the black ribbon cover on top of the machine, as well as the lower ribbon cover, by pulling gently on each. Your printer should now resemble the image.



Step 2:

Push the two black plastic spindles into the full ribbon roll and the empty core. Ensure that your spindles are inserted exactly as shown in the image. The ribbon has ink on only one side (coating-side-out), and the spindle must be inserted properly in order for it to print.



Step 3:

With the yellow plug and lip/flange on the left, insert the full ribbon roll into the lower ribbon area. The yellow end of the spindle will notch with the yellow sprocket. A small amount of ribbon should be hanging freely.



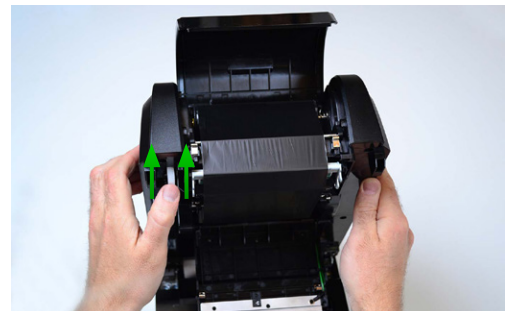
Step 4:

With the yellow plug and lip/flange on the left, attach the ribbon to the empty take up core using tape or the ribbon leader, and load it into the upper ribbon area. The yellow end of the spindle will notch with the yellow sprocket.



Step 5:

Your printer should now resemble the image. Place your thumb on the white gear and wind the ribbon onto the empty take up core several rotations. You should feel the gears turning, but it should not be overly difficult. Close the ribbon covers, then close the printer.



Loading the SafetyPro - Vinyl

(Also applies to Ranger kits)

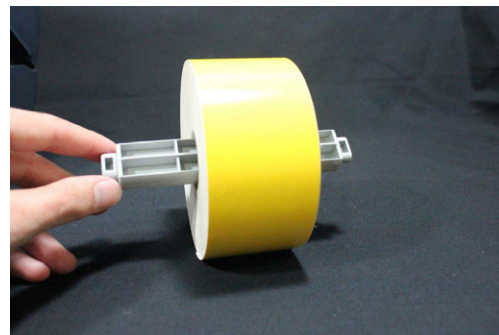
Step 1:

Make sure the machine is turned off while loading all materials. To open the machine, gently pull the two light green cover lock tabs towards you. Lift the chassis. Place the hood prop on setting #2. Your printer should now resemble the image.



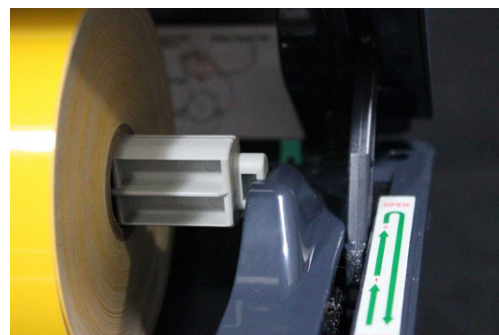
Step 2:

Select a roll of vinyl material and place the plastic supply holder through the core. If your printer included “wings” you may use them to center the roll, but they are only necessary with 1” material. Your roll of vinyl material should now resemble the image.



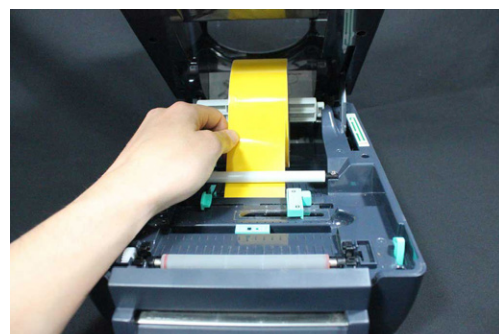
Step 3:

Place the loaded supply holder into the inside-rear of the machine on the cradle notches. As you unwind the material, the colored side should be facing up. Your printer and supplies should now resemble the image.



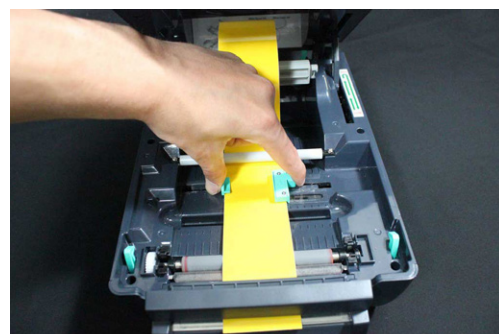
Step 4:

Place vinyl under the white bar and between the adjustable green guides, as shown in the image. Continue over the rubber platen and through the cutter, until the material is coming out the front of the printer about 1/4”.



Step 5:

Adjust the green guides so the right-hand guide lip is over the vinyl (this guide contains a sensor that must be positioned over the vinyl). Your printer and supplies should now resemble the image.



Loading the SafetyPro - Ribbon

(Also applies to Ranger kits)

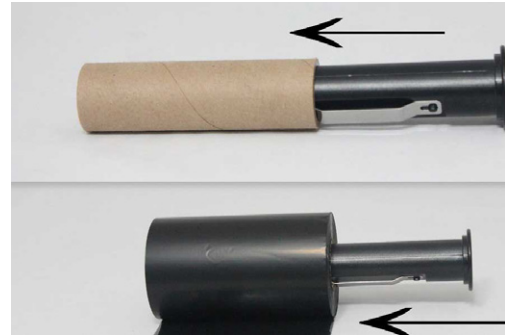
Step 1:

Make sure the machine is turned off while loading all materials. To open the machine, gently pull the two light green cover lock tabs towards you. Lift the chassis. Place the hood prop on setting #2. Open the clear ribbon cover as shown in the image.



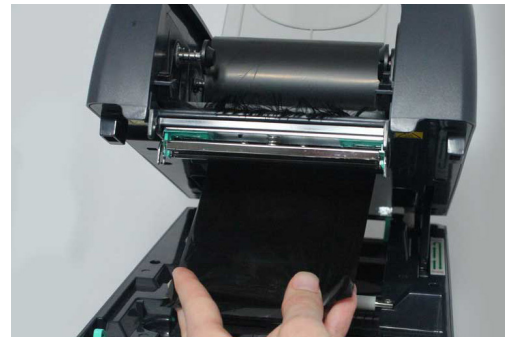
Step 2:

Push the two black plastic spindles into the full ribbon roll and the empty core. Ensure that your spindles are inserted exactly as shown in the image. The ribbon has ink on only one side (coating-side-out), and the spindle must be inserted properly in order for it to print.



Step 3:

With the black plastic spindle lip/flange on the right, insert the full ribbon roll into the rear ribbon sprocket. The ribbon end will hang down as shown in the image. Pull a small amount of ribbon out toward the front of the printer.



Step 4:

With the black plastic spindle lip/flange on the right, insert the empty take up core on the front ribbon sprocket. Pull the ribbon up to the empty core, as shown in the image, and attach the ribbon to the empty core with tape.



Step 5:

Your printer should now resemble the image. Using your thumbs, wind the ribbon onto the empty take up core several rotations. You should feel the gears turning, but it should not be overly difficult. Close the clear ribbon cover, then close the printer hood.



Loading the SafetyPro 9G

(Also applies to SafetyPro 7G)

Carefully open the hood of your SafetyPro 9G until it is resting on top of the unit. Inside the 9G, you will note the following components, as pictured in Figure 1.

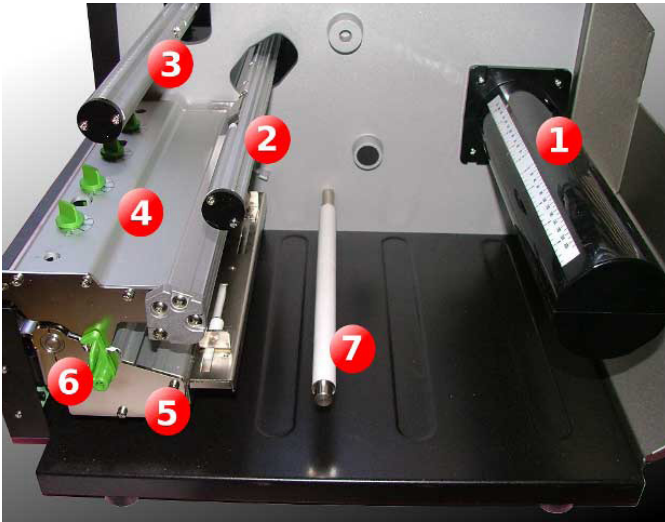
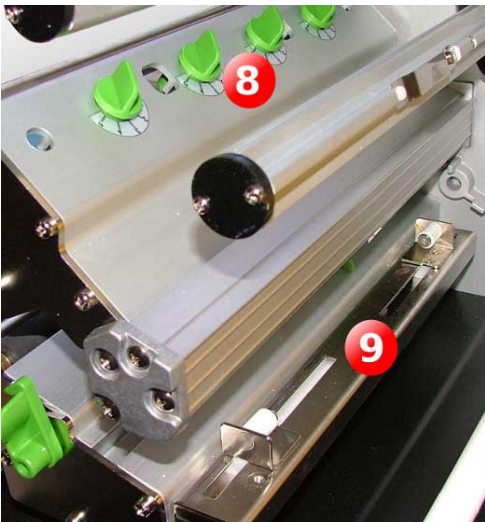


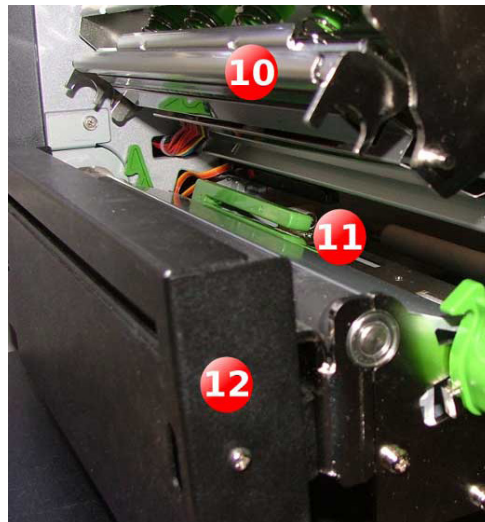
Figure 1 (Hood Open)

1. Rear Tape Roller – This rod holds your vinyl supply
2. Rear Ribbon/Ink Spool – This rod holds your ribbon/ink supply.
3. Front Ribbon/Ink Take-up Spool
4. Upper Print-head assembly
5. Lower Print-head assembly
6. Green Upper Print-head Release Lever
7. Bottom-Center White Over-Tape Guide

Additional components, located underneath the Upper Print-head assembly, can be found by gently pressing down on the Upper Print-head assembly and turning the Green release lever to the right. These less visible components are listed below, and are pictured in Figure 2a and Figure 2b.



**Figure 2a
(Top of Print-head)**



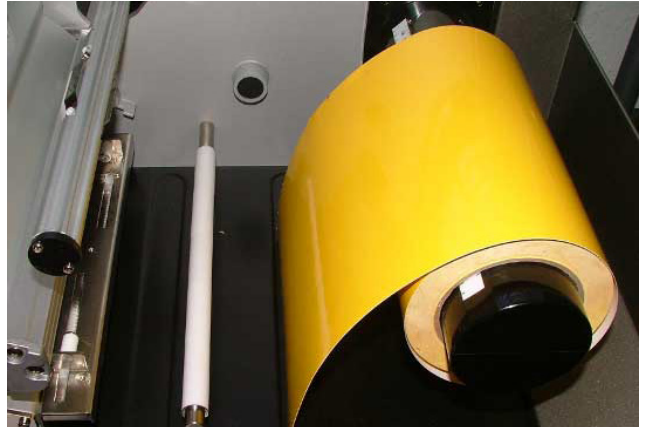
**Figure 2b
(Under Print-Head)**

8. Print-head Tensioners
9. Sliding Width Guides
10. Print-head
11. Green slidethrough tape Guide
12. Front Cutter Assembly

Loading the SafetyPro 9G Vinyl

Step 1: Place Sign Vinyl on Rear Tape Roller

Remove your sign vinyl from the packaging and pull the end of the tape loose. Make sure the end is smooth and free of debris. Slide the sign vinyl roll onto the Rear Tape Roller. The vinyl should come off the top of the roll to the left, with the surface of the vinyl facing up as it runs through the machine. *You may use the included wing-guides to keep the vinyl centered.



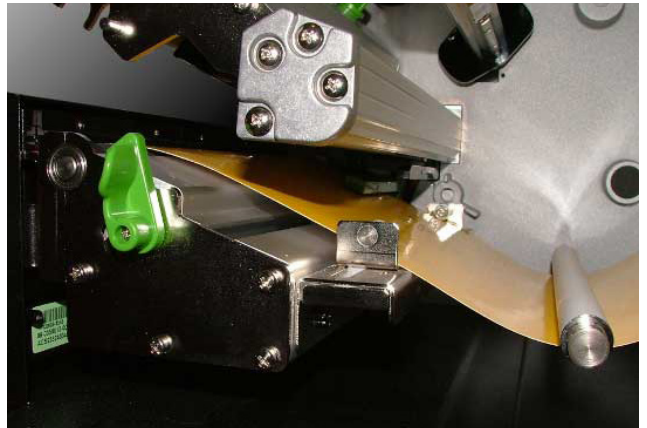
Step 2: Feed Sign Vinyl Under and Through

Carefully feed the sign vinyl under the white guide roller. Adjust the sliding width guides to fit the vinyl, and feed the sign vinyl under the two small rollers on the edges. The sign vinyl should slide freely from the rear tape roller.



Step 3: Release Upper Print-Head and Feed

To release the Upper Print-head assembly, gently press down on the upper print-head while rotating the green upper print-head release lever to the right. Feed the tape through the green slide-through tape guide and out the front of the machine through the slot in the cutter assembly.



Step 4: Check for a Clear Flow

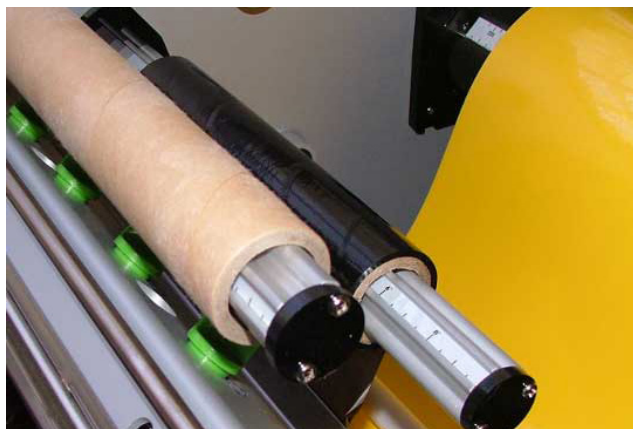
With the Upper print-head assembly still released, check that the sign vinyl flows cleanly through the printer. There should be very little resistance, and a small amount of vinyl should be coming out the front of the printer as shown.



Loading the SafetyPro 9G Ribbon

Step 1: Place the ribbon rolls on the spools

The Upper print-head assembly should still be open from loading the sign vinyl. If it is not, open it by gently pressing down on the upper print-head while rotating the green upper print-head release lever to the right. Next, if an empty take-up roll is not already on the front spool, slide one on. Place the full ribbon roll on the Rear ribbon spool.



Step 2: Verify ribbon direction, feed under

Your ribbon should be hanging off of the right-hand side of your roll, as pictured. If it is NOT, remove the roll and turn it around. Pull the beginning of the ribbon down and feed it under the upper print-head assembly, then above/over the black ribbon guide, and toward the front of the printer. Be sure to keep it free of folds and wrinkles.



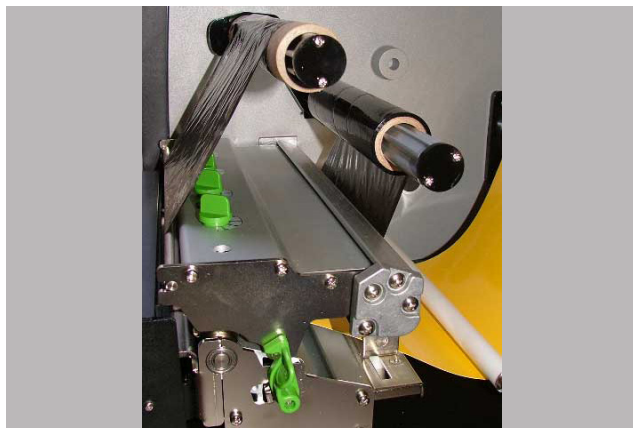
Step 3: Connect the ribbon to the take-up roll

Pull the ribbon all the way through under the Upper print-head assembly, then connect it with tape to the empty rewind roll on the Front Ribbon spool, as pictured. To ensure a wrinkle free print, tape each end and the middle to the take up spool.



Step 4: Close Print-head

Close the Upper print-head assembly firmly until the Green release lever catches. Ensure that there is a tight fit the full length of the Upper print-head. Your supplies should be firmly in place, and the ribbon should be taught. You may now close the printer hood and proceed to printing from your PC.

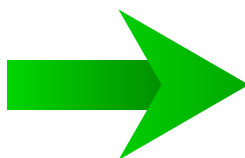


Drivers and Software

1st: Connect & Power-on the SafetyPro

For the easiest installation, load, connect and power-on your SafetyPro before installing the driver.

**Load, connect &
Power-on SafetyPro**



**Run the installation
from the CD**

2nd: Install Print Drivers & Software



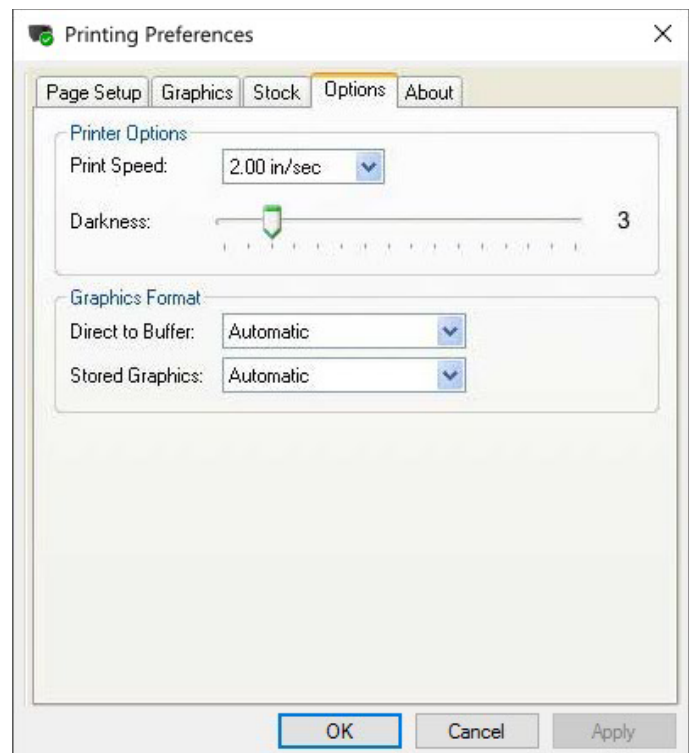
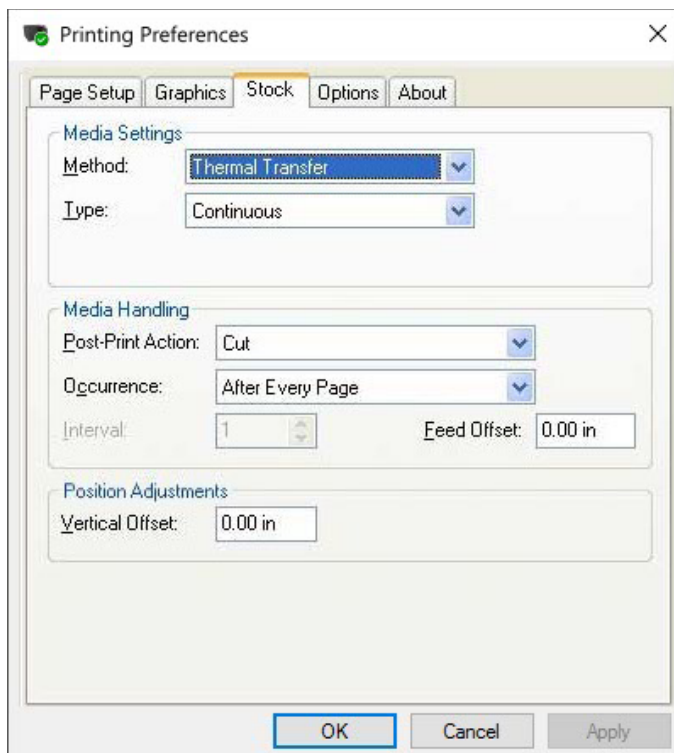
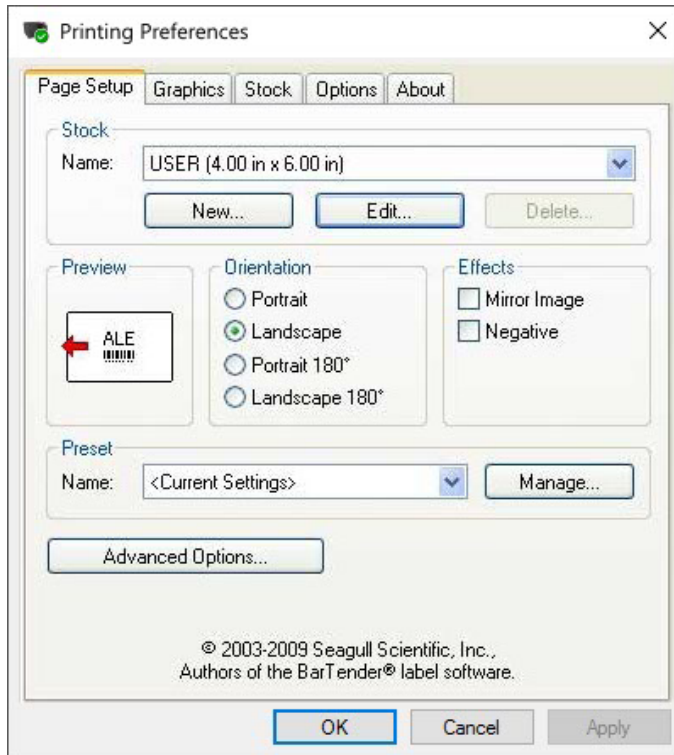
- When the CD is inserted, the install screen shown on the left will appear on.
- Click each option to install.

You should load, connect and power-on your SafetyPro printer **BEFORE** installing the driver.

It is recommended that you install **ALL** of the software on the CD.

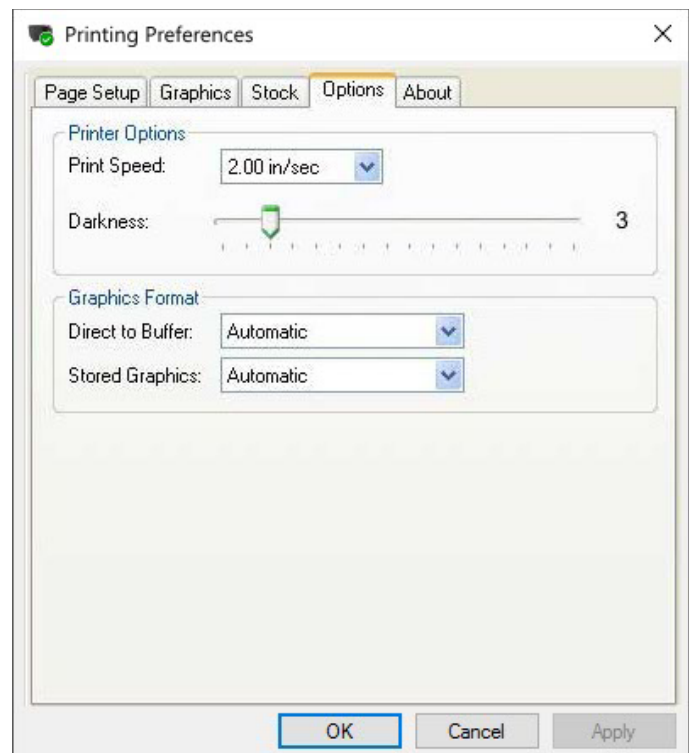
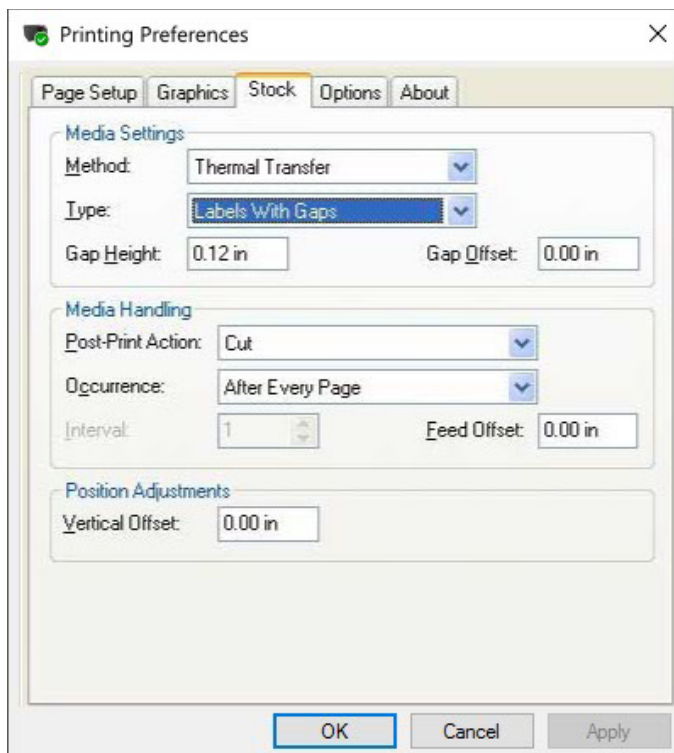
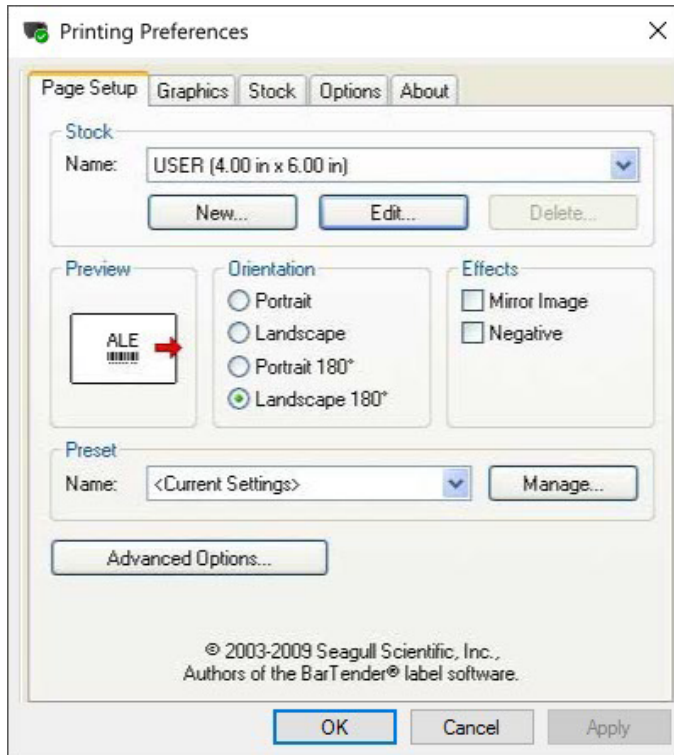
SafetyPro Print Driver Settings

For continuous roll vinyl label stock (regular labeling material, general purpose labeling)



SafetyPro Print Driver Settings

For die-cut vinyl label stock (arc flash, NFPA RTK, ANSI, Color stripe, and blank die-cut labels)



Using FacilityWare Label Manager (Part I)

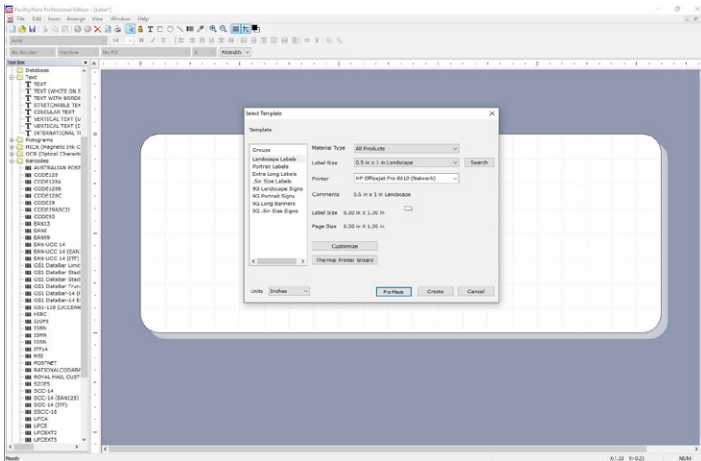


Figure 1: New Label

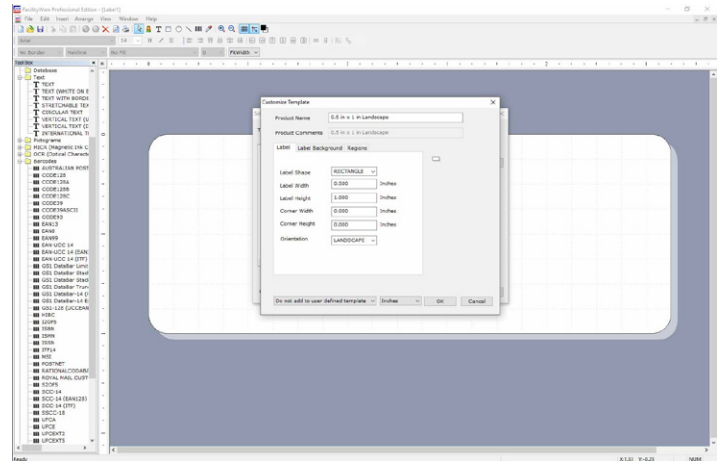


Figure 2: Custom Size

First, choose your label template...

When you start FacilityWare, you will be asked to select your template (Figure 1). You can input your layout and loaded material type, then choose your label size from the selections. If you need a custom size that is not on the list, you may click the “Customize” button, and input your size manually (Figure 2).

If you want to use a pre-made template for Arc Flash, RTK, ANSI, or other standard labels, click the “Templates” button on the bottom of the template setup screen (Figure 1). Choose your template from the list provided.

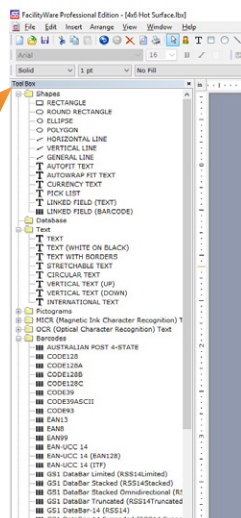


Figure 1: New Label

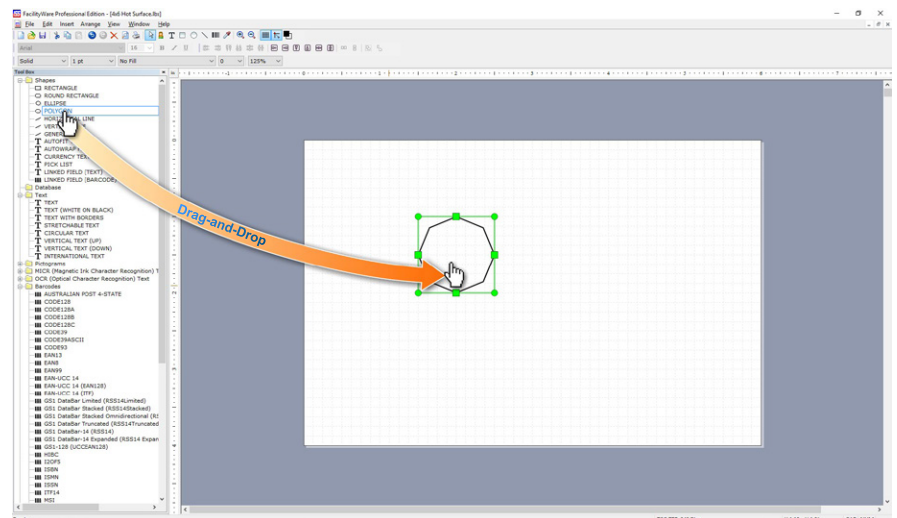


Figure 2: Custom Size

“Drag-and-Drop” makes label creation easy

The ToolBox (Figure 3) provides you with all of the available objects for creating your label. To add any object from the ToolBox to your label, simply “Drag and Drop” it (See Figure 4). Once the object is on your label, you can modify it as needed.

Using FacilityWare Label Manager (Part 2)

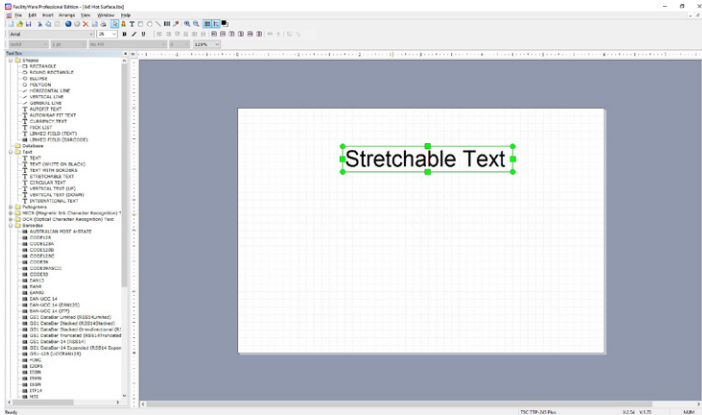


Figure 5: Stretchable Text Object

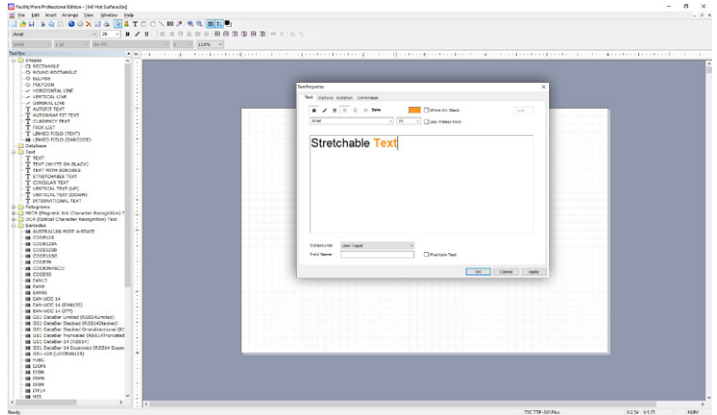


Figure 6: Text Object Properties

Adding Text

To add text to your label, locate the “Stretchable Text” object in the toolbox and “Drag-and-Drop” it onto your label. Once added, the object will have green dots around the edges, used for resizing (Figure 5). You may click and drag the object anywhere on your label.

To edit the object, double-click it OR right-click and select “Properties.” The Object Properties dialog will appear (Figure 6). You may enter multiple lines of text, and manipulate font styles and sizes for any part of the text, as shown. Multiple fonts and sizes may be used in a single object.

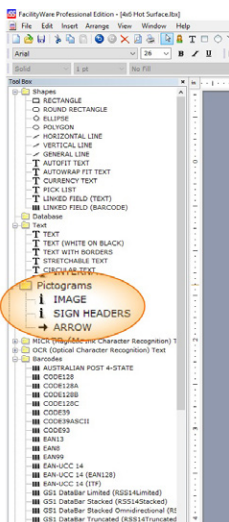


Figure 7: Image Objects

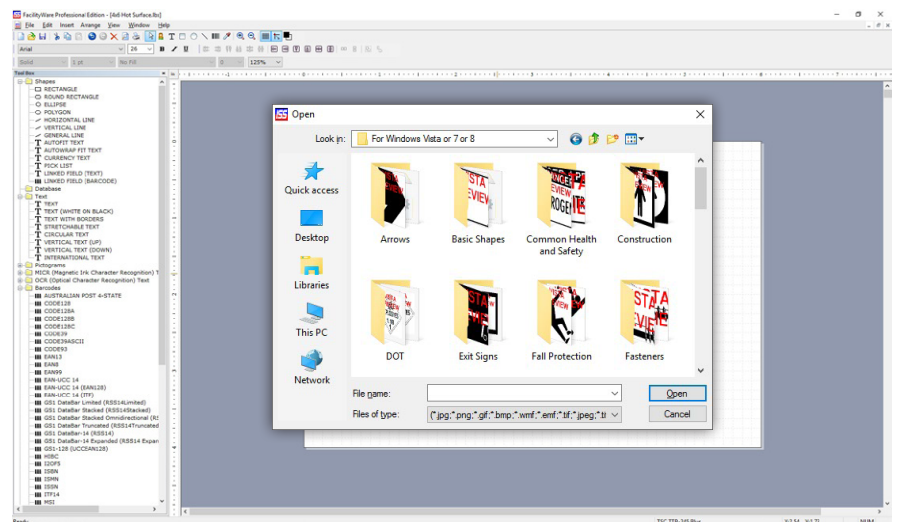


Figure 8: Select an Image

Adding Images

“Drag-and-Drop” any Image Object from the Pictogram section in the ToolBox (Figure 7). The image selection dialog will appear automatically (Figure 8). FacilityWare includes thousands of labeling images, which you can use on virtually any type of safety label imaginable. Choose one of these included images, or browse to your own image, double click and it will append to your label blank.

Using FacilityWare Label Manager (Part 3)

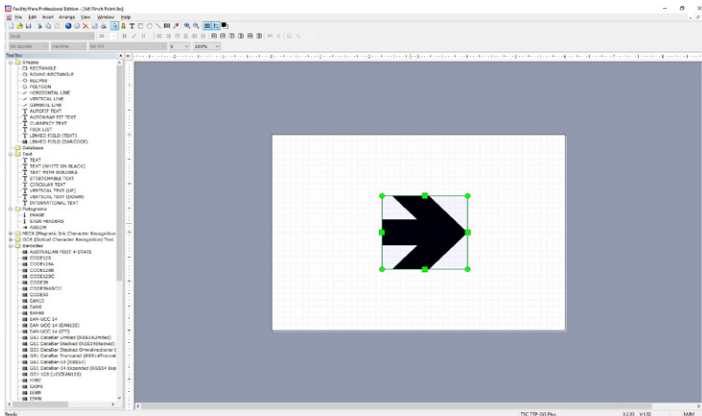


Figure 9: Image Object Selected

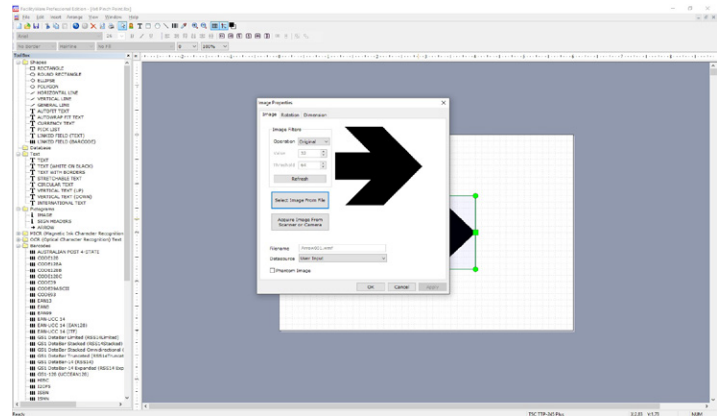


Figure 10: Image Object Properties

Adding Images (continued)

Once you have inserted an image object it will appear with green dots around it, used for resizing (Figure 9). Move the image and size it as desired. For additional image object options, such as rotation and color control, double-click the image OR right-click and select "Properties." If you are using a color image, make sure to convert it to black-and-white for label printing.

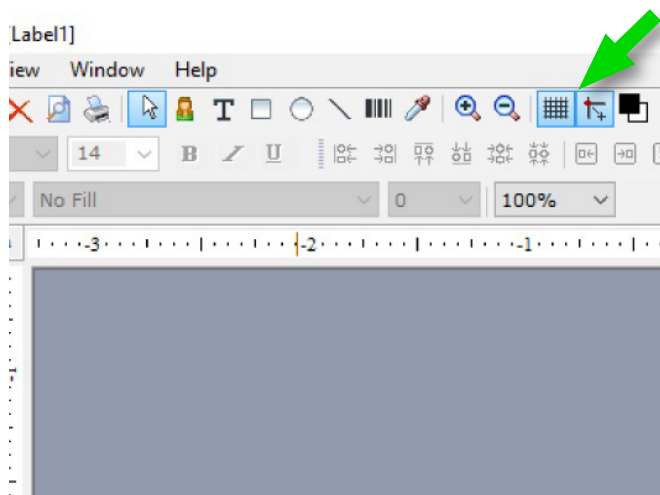


Figure 11: Grid Options

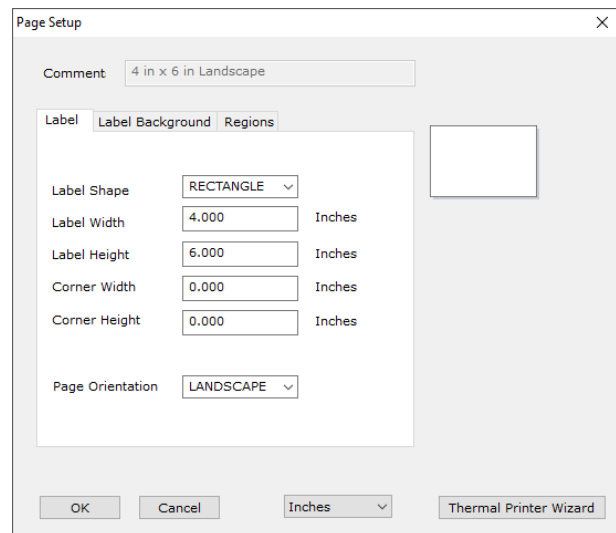


Figure 12: Label Setup

Grid Options and Label Setup

FacilityWare is designed to let you control your label creation experience. Some customers may want to disable the "Snap-to-grid" feature, which can be done quickly and easily using the toolbar at the top of the software (Figure 11).

If you decided you need a different label size after you have already started with your label creation, you can select the File menu at the top, then choose Label Setup (Figure 12). Adjust your size as needed.

Using FacilityWare Label Manager (Part 4)

Using built-in GHS label templates

FacilityWare ships with over 100 built-in GHS label templates, based on Annex 3 of the GHS standard. These label templates cover all of the major categorizations in GHS, and provide a starting point for properly labeling chemical hazards. You will be responsible for selecting the appropriate category and ensuring the final label output.

To select a GHS label template:

1. First, get to the “Select a Template” dialog by starting FacilityWare or by selecting File>New from the FacilityWare menu if you already have FacilityWare loaded.
2. Next, click the “Premade” button.
3. Now, navigate to the “GHS” folder
4. Select the appropriate classification category from the list
5. Choose the appropriate classification label within the category, select it to open
6. Complete the label by verifying all information and entering any specific information that may be required for that label
7. You may click “File>Save As” if you wish to save your new completed label

ISS RTK Label Creator

Print from a database of thousands of pre-defined NFPA chemical labels in seconds

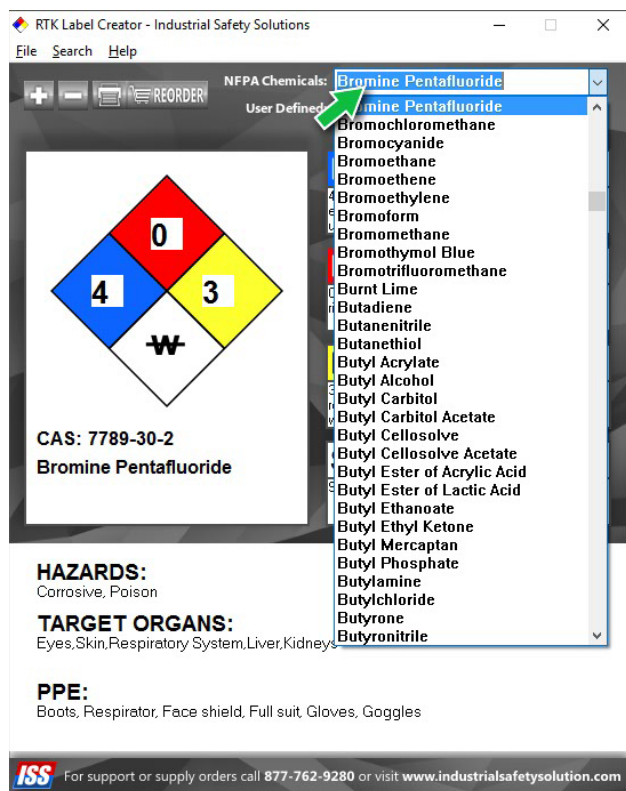


Figure 1

Selecting a Chemical

In RTK Label Creator, you can order the list of chemicals by CAS number or alphabetically. Using the “Search” menu, choose either of these sort orders. The default sort order is alphabetical.

Once you have sorted the chemical list, choose a chemical from the drop-down on the upper right-hand corner of the software. Click the chemical to load the hazard information. All of the information will appear on the screen. Review it for accuracy against your chemical manufacturers MSDS sheet before continuing.

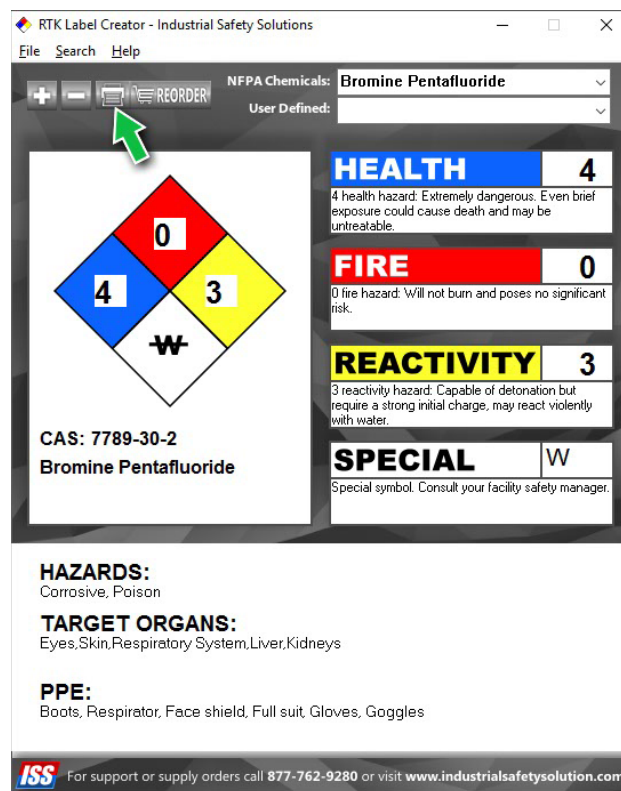


Figure 2

Select Quantity and Print

Once you select a chemical, click the print icon to print the label. Select the label size that matches your loaded supply, then enter a quantity and click OK to print. Be sure you have the proper RTK label stock loaded and aligned. Use the properties button to setup your printer for the correct stock size (refer to the print driver settings page for die-cut materials).

SafetyPro Order Form

14791 SE 82nd Dr, Clackamas, OR 97015 – 503-303-5968 (Fax)

Order Information		
Line Item	Qty	Price
Totals:		

Bill To			
Contact Name			
Contact Phone			
Company Name			
Street Address:			
City:	State:	Zip	
Notes:			

Ship To (if different)			
Contact Name			
Contact Phone			
Company Name			
Street Address:			
City:	State:	Zip	
Notes:			

Credit Card Information	
Credit Card Type:	<input type="checkbox"/> VISA <input type="checkbox"/> MasterCard <input type="checkbox"/> American Express <input type="checkbox"/> Discover
Credit Card Acct #:	CCV:
Credit Card Expiration Date:	
Name as it Appears on Credit Card:	
Payment Amount (USD): \$	
Cardholder Signature:	Date:
Notes:	

Tech Support

ISS offers free lifetime tech support to all of its customers. For businesses that require a support agreement, we offer various term contracts. Contact your sales rep for more information.



Best Warranty and Service

We are absolutely confident that our SafetyPro Vinyl Label Stock will get the job done right, and last over the long haul. If labels made with SafetyPro Vinyl fail within five years of purchase, we will provide a one-time replacement roll of the same supply. Now not only your printer is covered by warranty, but even the labels and signs you make are covered.



SafetyPro labels and signs are tested for durability under exposure to light, UV, moisture, and many other elements. Our materials are not only tested by engineers in a lab, they also endure the rigorous and ongoing real-world test. If a material does not pass our tests, it is reformulated and replaced. Because we only sell the highest quality materials, and can guarantee it, we are confident to be offering this industry leading warranty.

The supply warranty applies to SafetyPro Vinyl Label Stock, our most popular continuous supply used for pipe marking, rack and bin labeling, safety signs, arc flash labeling, 5S labeling and OSHA required labels.

Highest Quality Vinyl

Industrial Safety Solutions is an industry-leading provider of quality vinyl labeling material and printing equipment. Our premium vinyl is formulated for high-quality sublimation printing and maximum finished label lifespan. As with all of our supplies, we take great pride in providing our customers with the best quality on the market.

Our Customers

We serve satisfied SafetyPro customers around the world. While we're thrilled to service fortune 100 companies, government agencies, and military bases, we also take pride in service small to medium-size businesses in every industry. Safety labeling is a universal need, no matter how large or small your company may be. Let us add you to the growing list of satisfied SafetyPro customers!

